



# Sampling Valve Extraction Containers

Strahman Sampling Valves enable facility operators to extract live samples from their systems during the manufacturing process. In addition, placing valves at multiple areas throughout the line will allow the operator to promptly take corrective action in the process line, thereby improving quality assurance.

Since operator safety is the utmost concern, Strahman recommends using an adequate sample storage device with our sample valves. Strahman offers a complete line of sample storage accessories designed to effectively isolate a sample while protecting the operator from accidental exposure. Strahman has shown proven industry-leading solutions for safe and reliable sample extractions for over 100 years.

## SAMPLE VALVE EXTRACTION CONTAINERS

Strahman's standard Sample Valve SV Series, with its non-clogging design, will safely and reliably draw live samples. Our Sample Valves, used in conjunction with our extraction containers, will further reduce any dangerous risk to the operator.

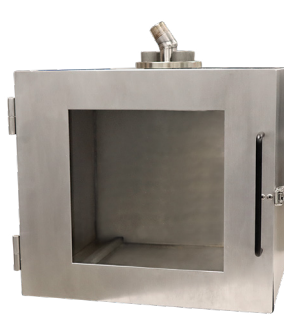
- ✓ Safe and reliable extraction
- ✓ Reduces risk of dangerous spills, splashes, and overages
- ✓ Provides maximum protection for the operator
- ✓ Customizable to your specifications of thread-type required



SVBA



SVLBA



SVBC



SVSS

PRODUCT	PRODUCT CODE	CONTAINER FEATURES
<b>BOTTLE ADAPTER</b>	<b>SVBA</b>	<ul style="list-style-type: none"> <li>• Polycarbonate protective shield</li> <li>• GL45 Threaded Glass, 250ML or 500ML (customer may also supply their own)</li> <li>• Glass Bottle maximum temperature to 400°F / 100 Kelvin Thermal Shock rating</li> <li>• Flanged or threaded adapter per customer specs</li> <li>• 1/8" x 1/4" NPT vent</li> </ul>
<b>LOCKING BOTTLE ADAPTER</b>	<b>SVLBA</b>	<ul style="list-style-type: none"> <li>• Outer shield of solid SS316 construction, inner liner of glass for added level of protection</li> <li>• GL45 Threaded Glass, 250ML or 500ML (customer may also supply their own)</li> <li>• Glass Bottle maximum temperature to 400°F / 100 Kelvin Thermal Shock rating</li> <li>• 1/8" x 1/4" NPT vent</li> </ul>
<b>BOX CONTAINER</b>	<b>SVBC</b>	<ul style="list-style-type: none"> <li>• Heavy duty aluminum 316L or 6061 (can be made with other materials upon request)</li> <li>• 13"w x 13"d x 13"h (custom sizes upon request)</li> <li>• Locking hinge for added security</li> <li>• Glass window for viewing; add your own container to receive the sample</li> </ul>
<b>SAMPLE STRAW</b>	<b>SVSS</b>	<ul style="list-style-type: none"> <li>• Injection molded Nylon</li> <li>• Disposable straw, perfect for applications using glues and resins; fluid is withdrawn through Sample Straw into your own container</li> <li>• Can only be used with our modified SV700 model</li> </ul>

